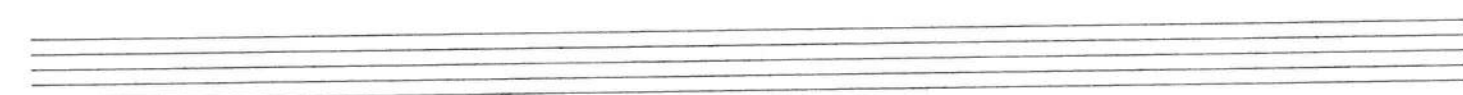
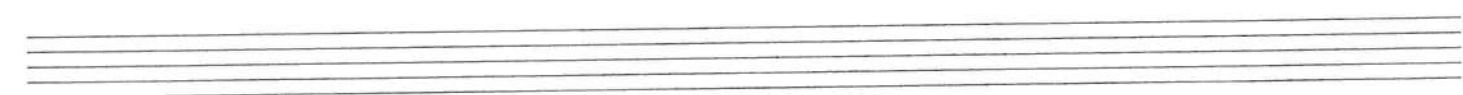
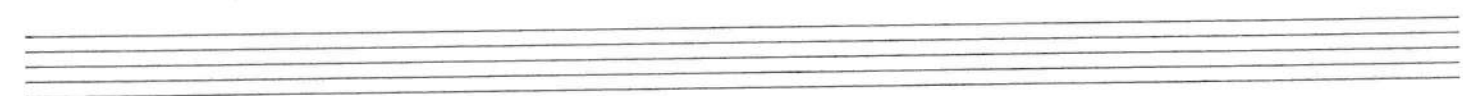
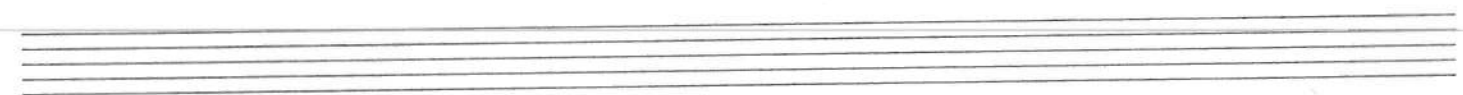
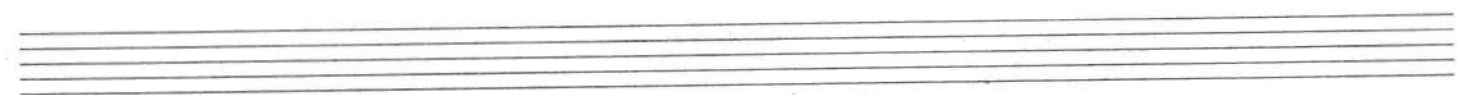
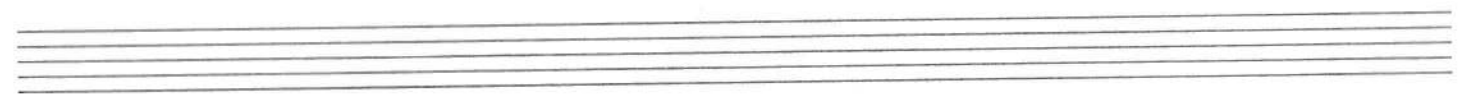
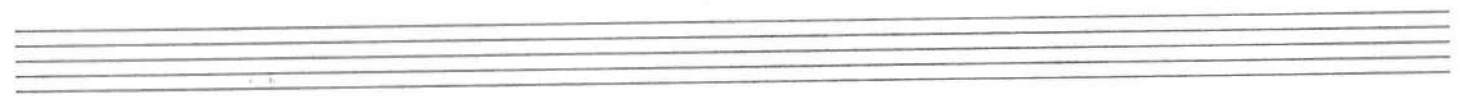
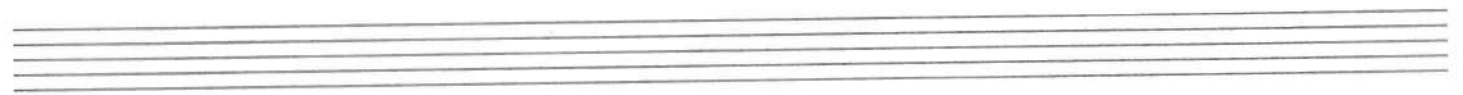
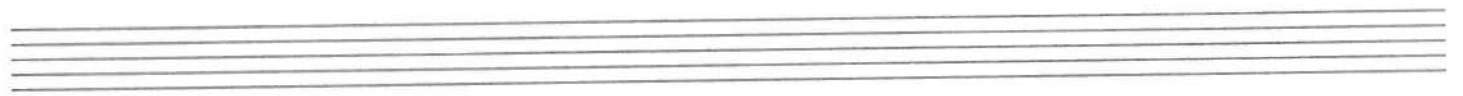
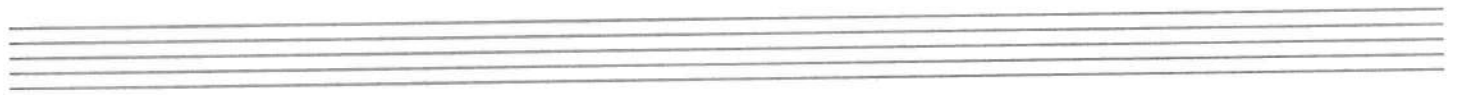


Santa No. 4

Allegro

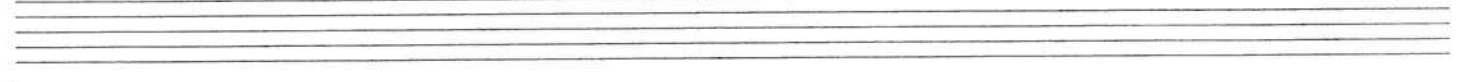
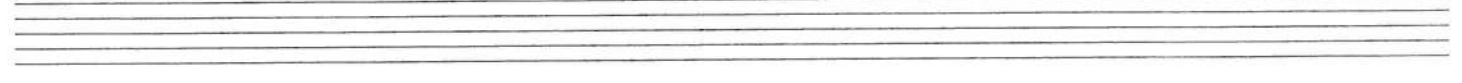
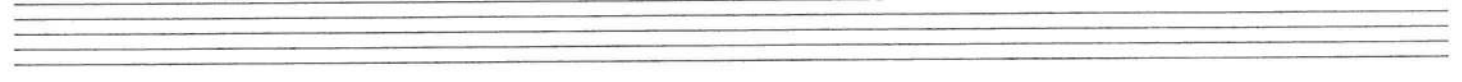
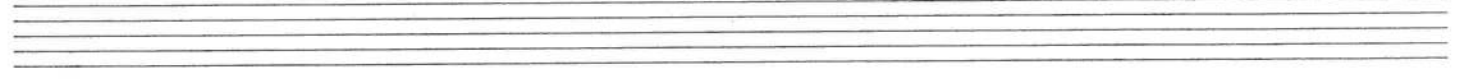
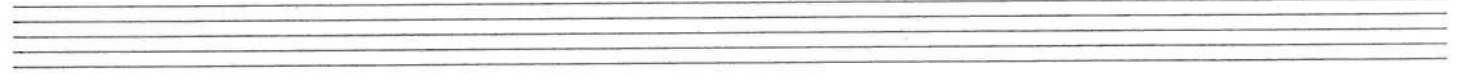
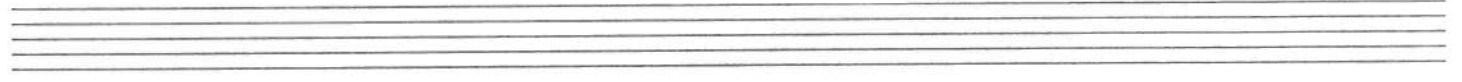
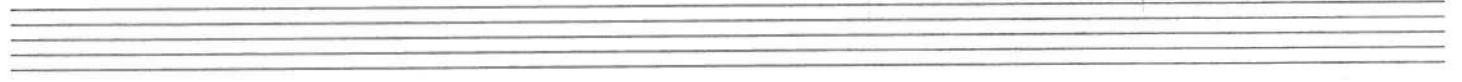
This is a handwritten musical score for a piece titled "Santa No. 4". The tempo is marked "Allegro". The score consists of 12 staves of music, each beginning with a treble clef and a 9/8 time signature. The notation is dense and includes various rhythmic values, accidentals, and dynamic markings. Several notes and rests are enclosed in small boxes, and some are accompanied by circled letters or numbers. The music features a complex rhythmic pattern with frequent eighth and sixteenth notes, often beamed together. There are also some larger notes and rests interspersed throughout. The overall style is that of a working draft or a composer's sketch.



Handwritten musical score for guitar, consisting of seven staves. The notation includes rhythmic markings such as 'x' and '4', and various chord symbols in boxes (e.g., G, F, E, D, C, B, A). The score concludes with a double bar line on the seventh staff.

D.S. al Coda (alt. har.)

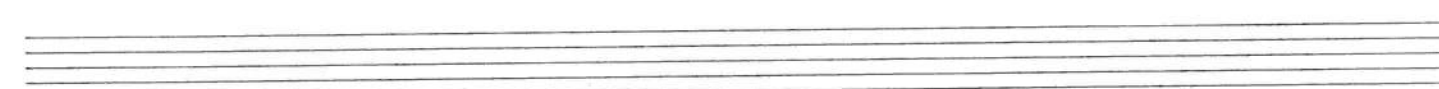
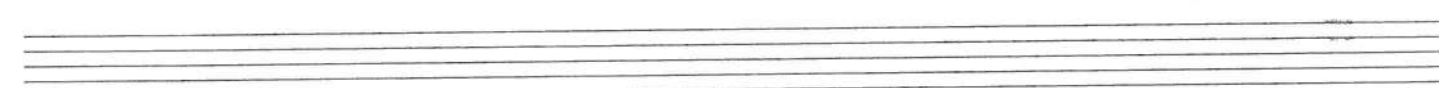
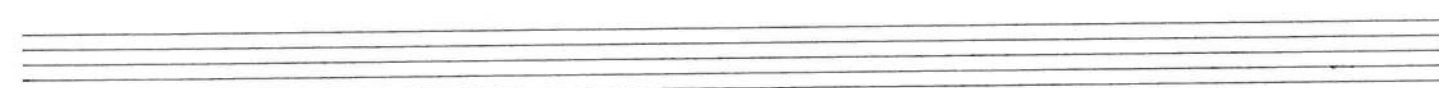
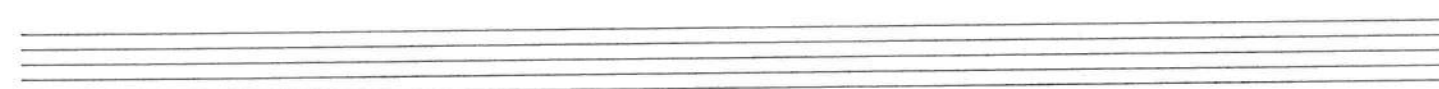
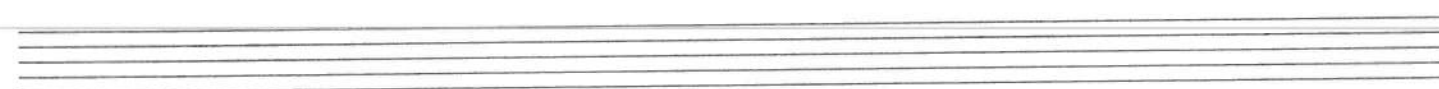
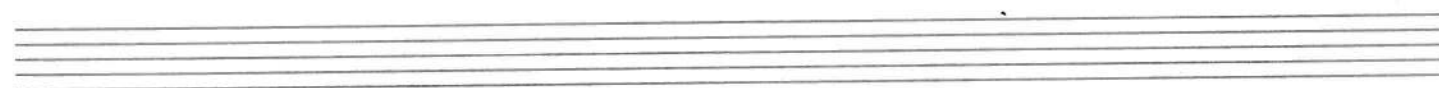
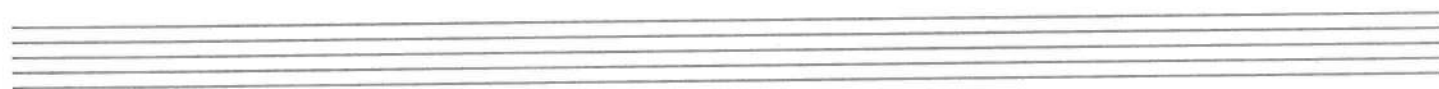
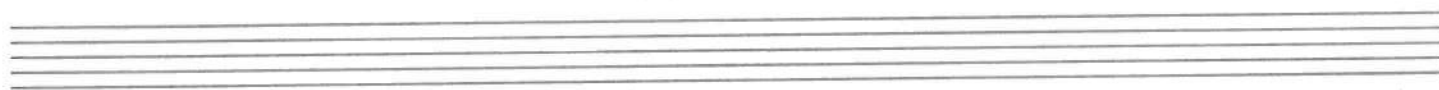
Four empty musical staves, each consisting of five horizontal lines, positioned below the main score.



Adagio

The image shows a handwritten musical score for five staves. The tempo is marked 'Adagio'. The notation includes various note values, rests, and square annotations. The first staff begins with a treble clef, a 9/8 time signature, and a key signature of one flat (B-flat). The notes are mostly quarter and eighth notes, with some rests. Square annotations are placed above and below the notes. The second staff continues the melody. The third staff features more complex rhythmic patterns and square annotations. The fourth staff ends with a double bar line and a shaded area. The fifth staff is mostly empty, with a few notes and rests.

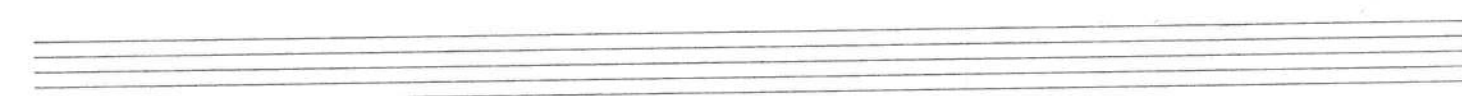
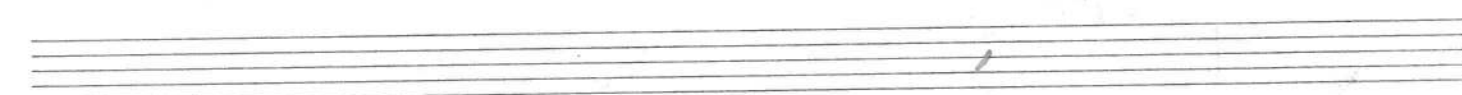
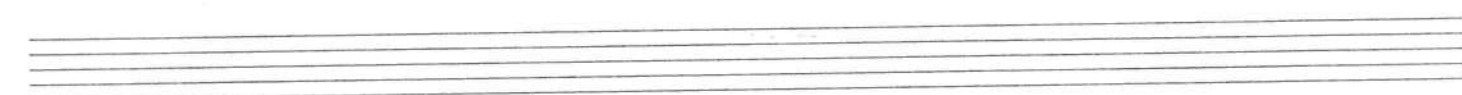
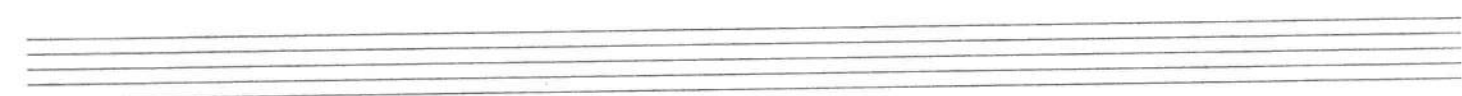
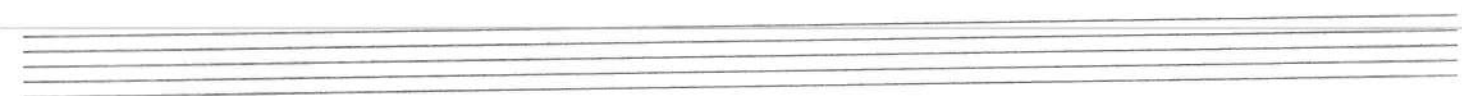
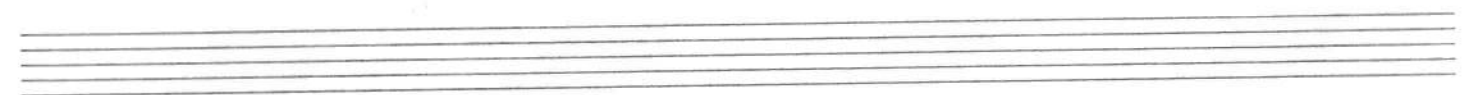
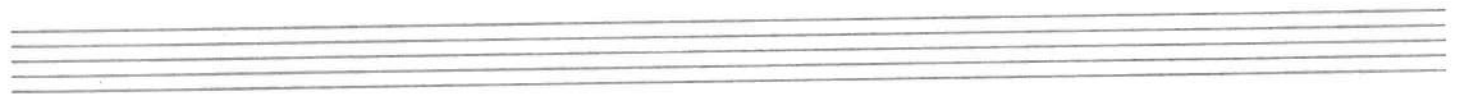
Five empty musical staves, each consisting of five horizontal lines, arranged vertically. They are completely blank, with no notation or markings.



Rowleau

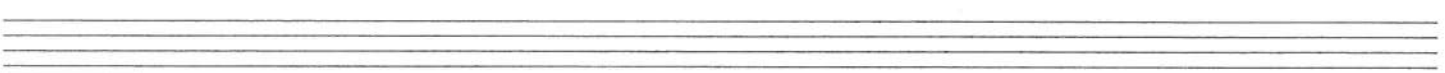
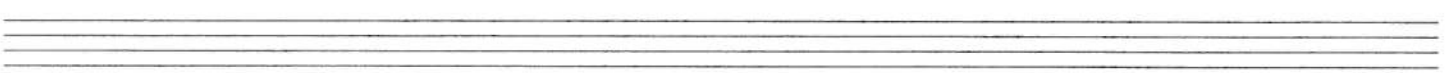
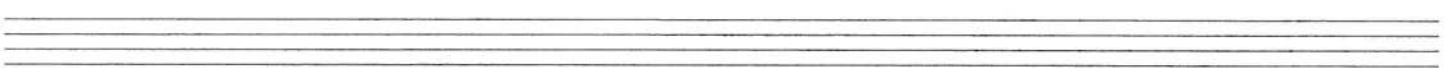
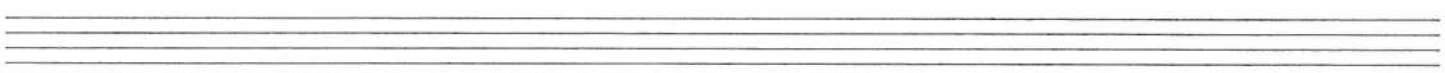
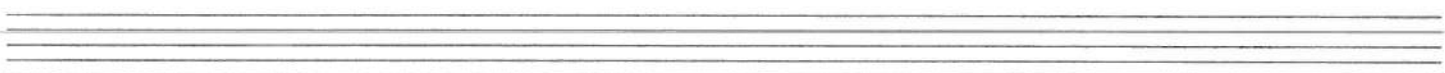
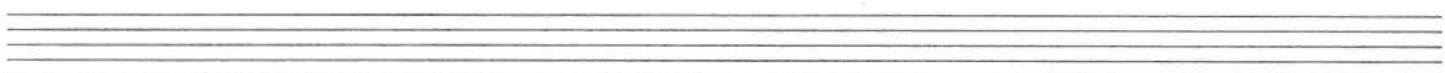
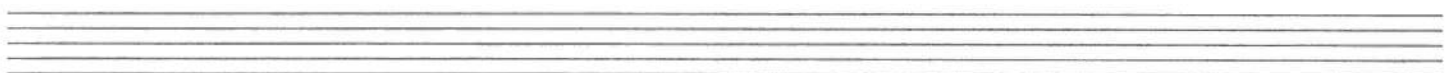
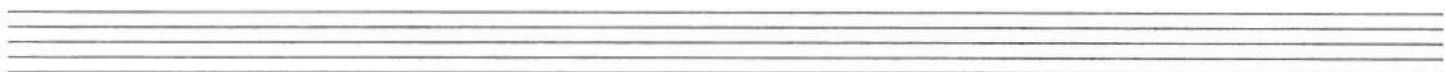
A handwritten musical score for a piece titled "Rowleau". The score consists of ten staves of music, each beginning with a treble clef and a 9/8 time signature. The notation is dense and includes various rhythmic values, accidentals, and dynamic markings. Key annotations include:

- Section markers: "A" at the start of the first staff and "B" at the start of the seventh staff.
- Dynamic markings: "p" (piano) in several places, notably on the fifth and seventh staves.
- Performance directions: "Fine" in a box at the end of the fifth staff, and "P" in a circle on the seventh staff.
- Other markings: "sc" in a circle on the fifth staff, and "P'" in a circle on the seventh staff.
- Structural elements: A large scribbled-out section at the end of the sixth staff, and various boxed notes and symbols throughout the score.





This image shows a handwritten musical score consisting of 12 staves. The notation is dense and includes various rhythmic values, accidentals, and dynamic markings. The score is organized into several systems, with some staves ending in hatched lines indicating a section's end. Annotations include circled letters 'A', 'B', and 'C' above the staves, and the text 'D.C. al' followed by arrows pointing to circled letters 'A' and 'B' on the fourth and fifth staves respectively. The handwriting is in black ink on a white background.



Handwritten musical score for guitar, consisting of four staves. The notation includes chords, accidentals, and dynamic markings. The first staff has a circled '0' above it. The second staff has a circled '6' above it. The third staff has a circled '2' above it. The fourth staff has a circled '0' above it. The text "D.C. al Fine" is written at the end of the fourth staff.

~~S.F.~~ Pour D.B.

